

# Wellmark Series 7400

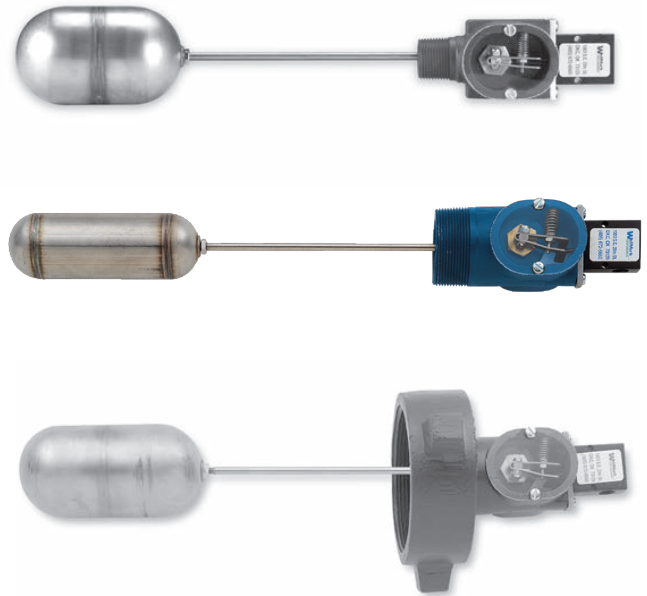
Snaptrol pneumatic and electrical liquid control, low pressure no-bleed

## Application

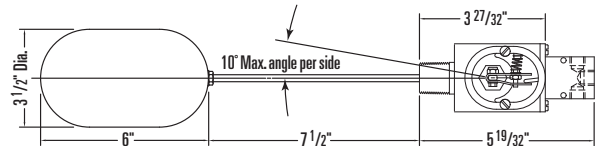
For use in low-pressure vessels or tanks, this versatile and multioptional device can be used as a level control or as a component of Hi-Lo level alarm systems. The 1" MNPT unit may be mounted into a 1" coupling when the float is accessible from inside the vessel. If float is not accessible, a 2" or larger connection must be provided to allow passage of the float through the connection. The pneumatic 3-way 2-port no-bleed pilot valve makes this unit an excellent choice for the control of liquid level in oil and gas production equipment such as separators, dehydrators, treaters, as well as in manufacturing plants, hazardous waste disposal, food processing, petro chemical facilities, or wherever fluid levels need to be monitored or controlled.

## Features

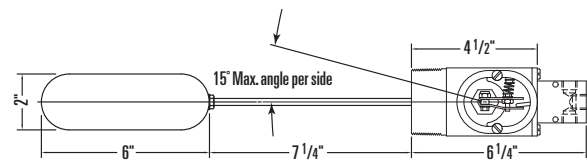
- No-bleed
- Cost effective
- Pneumatic or electric switch option
- 1" and 2" threaded or 4" union
- Other connections available on request
- Choices of float size and float arm extension length
- Float arm extensions limited to: 4", 6", 8", 10" (STD), 12", 14", 16", 18"



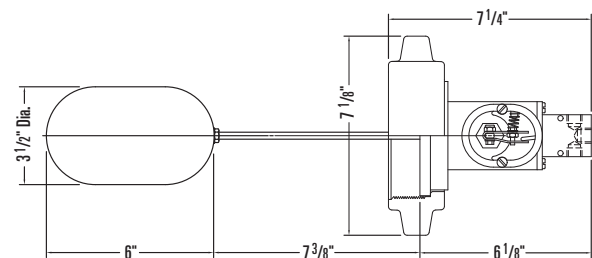
## Dimensional data



1" NPT Thread with std. Float and Arm



2" NPT Thread with std. Float and Arm



4" Union with std. Float and Arm

END SIZE / CONNECTION TYPE	1" THREADED	2" THREADED	4" HAMMER UNION
Body Material	A216 WCB	A216 WCB	A216 WCB
Body Max Working Pressure	500 PSI	500 PSI	500 PSI
Float Sizes	*2" x 6"	3" x 6"	**3-1/2" x 6"
Float Materials	316SS	316SS	316SS
Working Pressure	500 PSI	500 PSI	500 PSI
Collapse Pressure	720 PSI	850 PSI	800 PSI

\*Standard on 2", \*\*Standard on 1" Threaded & 4" Union

## Additional specifications

	STANDARD	OPTIONAL
Minimum SG	0.80	C/F
Operating Temperature	-20°F to 212°F	-20°F to 400°F
Seals	Buna-N	Viton
Bushing Retainer	Brass	316SS
Pneumatic 3-Way Pilots Specs		
Supply Pressure	75 psi	250 psi
Orifice	1/16"	1/32"
Connections	1/4" FNPT	N/A
Electric Switch Specs		
Type	Explosion Proof, Single Pole / Double Throw, UL & CSA listed	
Voltage Rating	"L96" 15 amps, 125, 250, or 480 VAC; 1/8 HP-125 VAC, 1/4 HP-250 VAC, 1/2 amp-125 VDC, 1/4 amp-250 VDC	

# Model code

## Determining the model code

Example given: standard model ST2TP - series 7400, 2" threaded process connection, pneumatic type control

**7400** **ST** **2T** **P** **\***

A
B
C
D

**A**

PRODUCT LINE SERIES	
Code	Series
ST	7400 Series

**B**

CONNECTION TYPE		
Code	Size	Type
1TS	1"	MNPT Threaded
2T	2"	MNPT Threaded
4U	4"	Hammer Union STD Thd.

**C**

OUTPUT SIGNAL - ACTUATION	
Code	Type
P	Pneumatic (3-Way Valve)
E	Electric (SPDT Only)

**D**

ADDITIONAL OPTIONS	
Code	Type
*	Please specify float size and arm length when selecting the model code
LA	Less Arm
LF	Less Float
HT	High Temp Option (400°F)

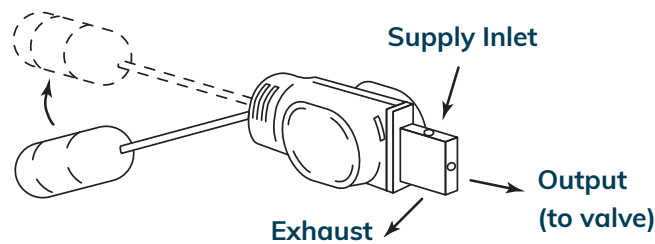
Consult Factory for other options

FLOATS AVAILABLE			
Size	Material	MWP	Used on
2" x 6"	316SS	500 psi	1" MNPT (1TS) & 4" HU (4HU)
3" x 6"	316SS	500 psi	2" MNPT (2T)
3.5" x 6"	316SS	500 psi	1" MNPT (1TS) & 4" HU (4HU)

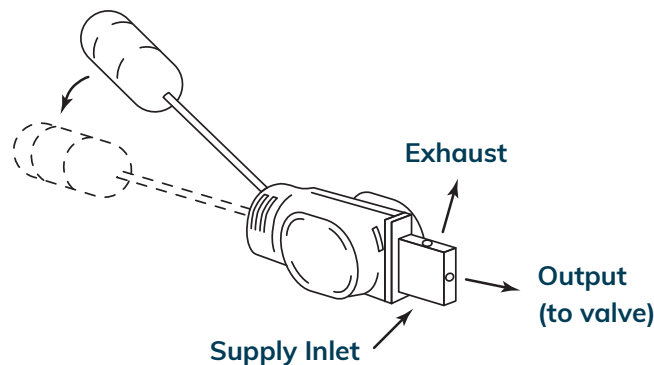
ARM LENGTHS AVAILABLE	
Sizes	Material
10" (STD)	303SS
4", 6", 8", 12", 14", 16", 18"	303SS

## Plumbing schematic

Direct acting  
when float rises,  
supply opens  
to output.



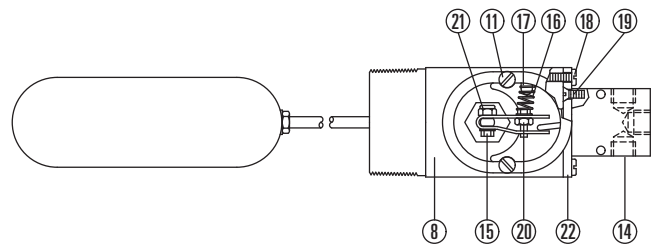
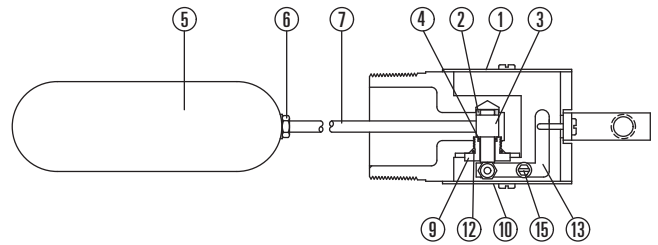
Indirect acting  
when float falls,  
supply opens



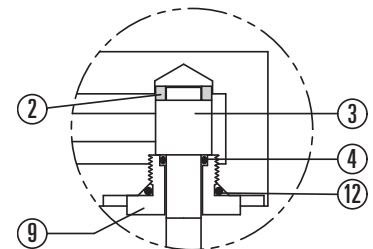
# Parts list

ITEM	DESCRIPTION	QTY.	PART NO.
1	NAME PLATE, ALUMINUM	1	1124642
2	BEARING SLEEVE, DELRIN®	1	1123700
3	TRUNNION, STAINLESS STEEL	1	1122743
4*	O-RING, BUNA-N	1	1001548
5	FLOAT 2"x 6",STAINLESS STEEL	1	1122101
	FLOAT 3"x 6",STAINLESS STEEL	1	1120556
	FLOAT 3 1/2" x 6",STAINLESS STEEL	1	1121215
6	JAM NUT, STAINLESS STEEL	1	1120092
7	FLOAT ARM, STAINLESS STEEL,10" STD.	1	1124652
8	BODY, 1" NPT PNEUMATIC, STEEL WCB	1	1125204
	BODY, 2" NPT PNEUMATIC, STEEL WCB	1	1120724
	BODY, 2" NPT ELECTRIC, STEEL WCB	1	1118920
	BODY, 4" UNION, PNEUMATIC, STEEL WCB	1	1145772
	BODY, 4" UNION, ELECTRIC, STEEL WCB	1	1123339
9	BUSHING, 360 BRASS	1	1122742
10	COVER PLATE, LEXAN	1	1119066
11	COVER SCREW, STL. PLATED	4	1125705
12*	O-RING, BUNA-N	1	1122901
13	ACTUATOR, STAINLESS STEEL	1	1125920
14*	3-WAY VALVE, PNEUMATIC ONLY	1	1122627
	ELECTRIC SWITCH, ELECTRIC ONLY	1	1160305
15	SCREW, STEEL PLATED	2	1125668
16	SPRING, STAINLESS STEEL	1	1123660
17	SPRING KEEPER, BRASS	1	1125754
18	SCREW, STEEL PLATED	2	1124662
19	SCREW, STEEL PLATED	2	1119356
20	JAM NUT, STAINLESS STEEL	1	1125079
21	LOCK NUT, STL. PLATED	1	1124663
22	MOUNTING PLATE, ALUM. PNEUMATIC	1	1120130
	MOUNTING PLATE 1, ELECTRIC	1	1122832
	MOUNTING PLATE 2, ELECTRIC	1	1125709
24*	HAMMER UNION, STD. V THREAD, WCB	1	1124917
	HAMMER UNION, ACME THREAD, WCB	1	1120530

\*Recommended spare part



Trunnion detail



---

## Why you can depend on genuine Norriseal-Wellmark products

- In-house engineering and technical support
- In-depth applications experience
- Award-winning innovation and ongoing product development
- ISO 9001 certified manufacturing
- Over five decades of industry service
- Compliance with all industry standards and specifications
- Responsive service and prompt delivery
- Field support available worldwide

Contact Norriseal-Wellmark for more information about our products and services.

### Texas

Houston . . . . . 713-466-3552

### Oklahoma

Oklahoma City . . . . . 405-672-6660

### Louisiana

Broussard . . . . . 337-837-3223



Follow us on LinkedIn.

### Request for Quote

NRS\_RFQ@championx.com



[NorrisealWellmark.com](https://NorrisealWellmark.com)

---

**Norriseal-Wellmark** | 11122 W Little York Rd | Houston, TX 77041

This document is provided on an "as is" basis without warranties of any kind. Norriseal-Wellmark DISCLAIMS ALL WARRANTIES, EXPRESS OR IMPLIED, INCLUDING, BUT NOT LIMITED TO, IMPLIED WARRANTIES OF MERCHANTABILITY, FITNESS FOR A PARTICULAR PURPOSE OR SUITABILITY FOR ANY PURPOSE, TITLE, AND NON-INFRINGEMENT. While reasonable care has been taken in the preparation of this document, Norriseal-Wellmark does not represent or warrant that the contents of this document are accurate, complete, reliable, current or error-free.