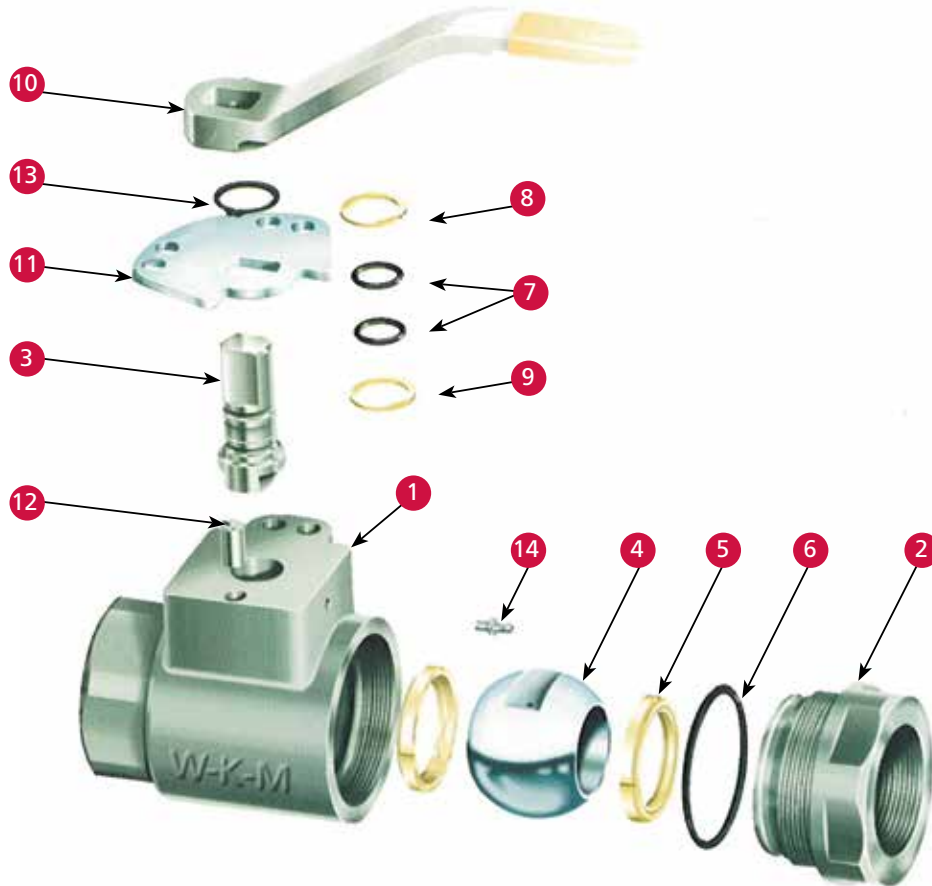


WKM[®] C50 Ball Valve

Two-piece threaded-end ball valves, fire-tested and certified to API 607 4th edition



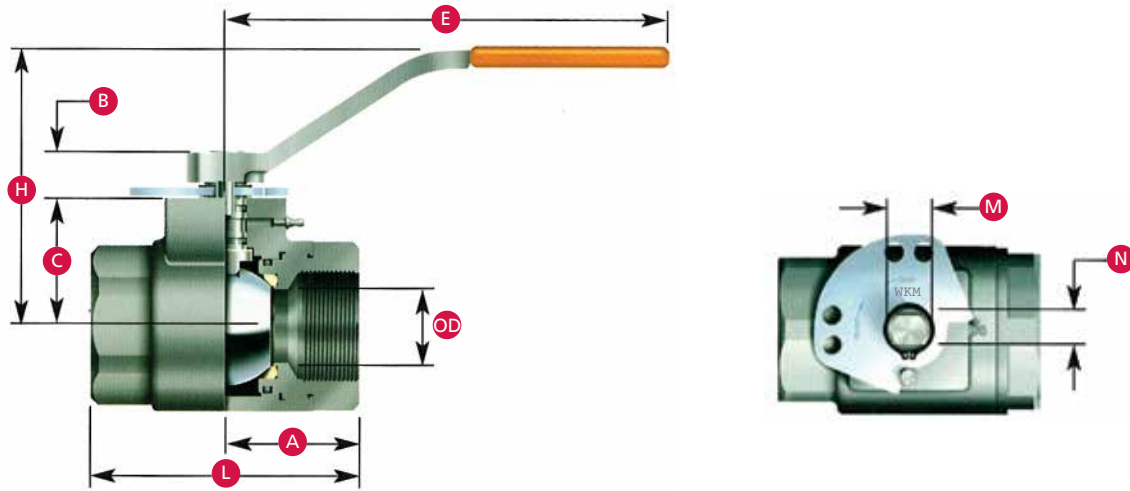
Features and Benefits

- Two-piece threaded-end ball valve, 5000 WOG
- Fire-tested and certified to API 607 4th edition
- Working pressure: 5000 PSI
- Conforms to NACE MR0175 (2002) specifications
- Positively retained stem design
- Encapsulated seat design
- Standard stem lubrication with fitting
- Tamper-proof double-locking plate

Materials List

| Item | Quantity | Part | Material |
|------|----------|-----------------|--------------------|
| 1 | 1 | Body | A487 |
| 2 | 1 | Adapter | A487 |
| 3 | 1 | Stem | CS Zinc/316 SS |
| 4 | 1 | Ball | A105 w/NiCr/316 SS |
| 5 | 2 | Seat | Delrin |
| 6 | 1 | Body Seal | Buna |
| 7 | 2 | Stem Seal | Buna |
| 8 | 1 | Stem Bearing | Delrin |
| 9 | 1 | Thrust Bearing | Delrin |
| 10 | 1 | Handle Assembly | Carbon Steel |
| 11 | 1 | Stop Plate | Plated Steel |
| 12 | 1 | Stop Pin | Steel |
| 13 | 1 | Retainer | Spring Steel |
| 14 | 1 | Lube Fitting | Steel |

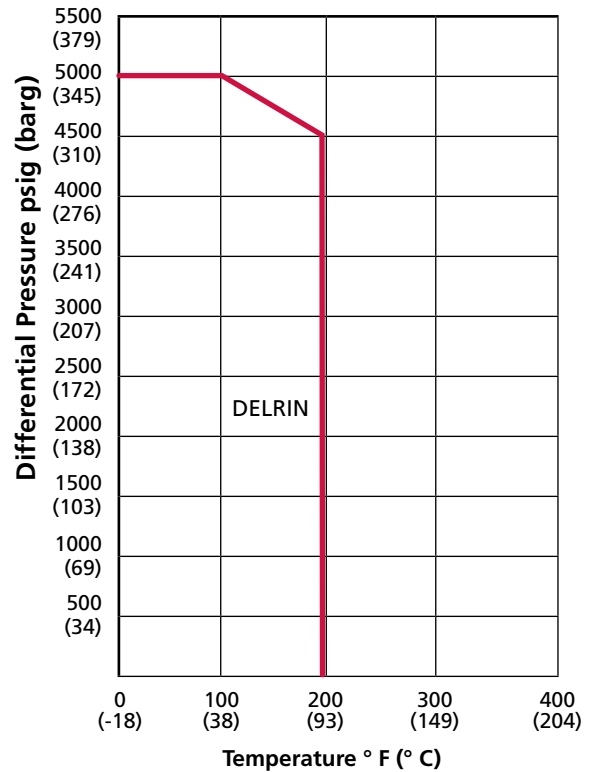
Dimensional Data



C50 Application

| Size in. (mm) | 1 (25.4) FP 1 x 1 (25.4 x 25.4) FP | 1-1/2 (38.1) FP 1-1/2 x 1-1/2 (38.1 x 38.1) FP | 2 (50.8) RP 2 x 1-1/2 (50.8 x 38.1) RP |
|---------------------|---------------------------------------------|---------------------------------------------------------|-------------------------------------------------|
| OD | 1 (25.4) | 1-1/2 (38.1) | |
| L | 4 (101.6) | 5-1/2 (139.7) | |
| A | 2 (50.8) | 2-3/4 (69.9) | |
| C | 1-5/8 (41.4) | 2-5/8 (66.8) | |
| H | 3-1/4 (82.6) | 5-1/2 (139.7) | |
| E | 6-1/4 (158.8) | 8-1/2 (215.9) | |
| B | 7/8 (22.4) | 1 (25.4) | |
| N | .432/.428 (11/10.9) | .620/.616 (15.7/15.6) | |
| M | .621/.617 (15.8/15.7) | .871/.867 (22.1/22.3) | |

Seat Rating



3250 Briarpark Drive, Suite 300
Houston, TX 77042
USA
Tel 1 281 499 8511