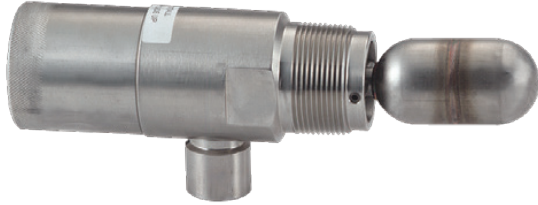


Wellmark Series 790

Horizontal level control floatswitch



Application

The Model 790 Floatswitch is a side-mounted liquid level switch which works on positive magnetic repulsion to complete an electrical circuit to a pump, valve, alarm or other device, when the liquid level in the vessel rises (or lowers) to a predetermined point.

Features

- **Corrosion resistant:** All wetted parts are 316 Stainless Steel
- **Variety of switch options:** SPDT, DPDT, high amp, high temp.
- **Explosion proof:** CSA APPROVED
 - Class I, groups C & D
 - Class II, groups E, F & G
 - Class III, enclosure type 4X
- **External chamber available:** carbon steel with (2) 1-in. NPT connections

Operation

A magnet is permanently welded into the float arm assembly; as the liquid in the vessel rises, moving the float up, the float arm pivots (down) repelling another magnet inside the 790 unit, causing snap action of the electrical switch. Since SPDT switches are utilized, the level switch can simply be wired to energize at either a high or low level position.

Electrical switches: SPDT micro switch, standard

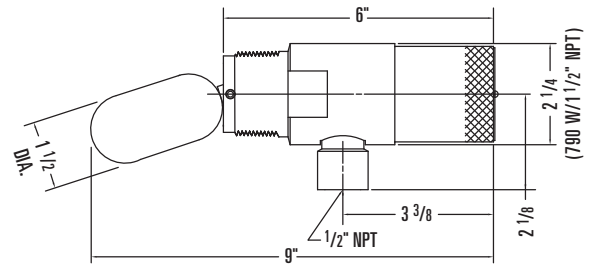
FUNCTION	TEMP.	SWITCH RATING
Standard	250 °F	5A @ 120 or 250 VAC, 28 VDC
High Amp	180 °F	11A @ 120 or 250 VAC
High Temp	400 °F	5A @ 120 VAC

Specifications

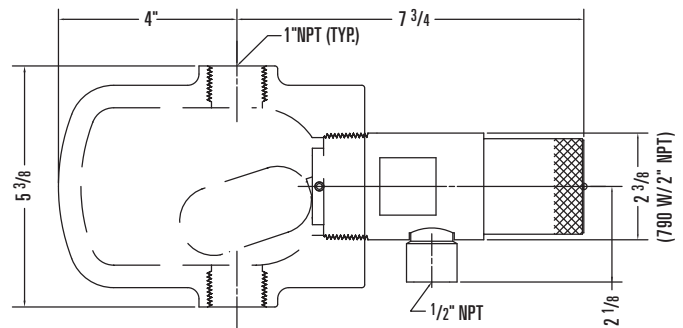
Switch housing	Explosion proof
Temperature limit	250° F (standard), 400° F (option)
Mechanical rating	10,000,000 operations
Operating pressure:	316 stainless steel float - std, 1,500 psig Polypropylene float, 5,000 psig
Level differential	Approximately 1-in.
Specific gravity	0.6 (only without extension arm)
Electrical connection	1/2-in. female pipe thread

Dimensional Data

790 Std. 1 1/2" NPT Or 2" NPT



790 With External Cage

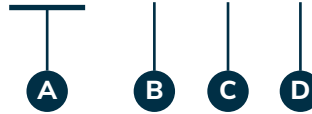


Model Code

Determining the model number

Example given: Standard model 790SF-1A float control with SPDT micro switch, 1 1/2-in. NPT vessel connector, 316 S.S. float, 316 S.S. arm and pivot for internal vessel mounting with pressure up to 1500 psi.

MODEL 790SF-1 A *



A TYPE OF SWITCH	
SF	SPDT dry contact - std.
SG	DPDT dry contact - std.
SK	SPDT high amp
SR	SPDT high temperature

B SIZE	
1	1 1/2-in. NPT
2	2-in. NPT

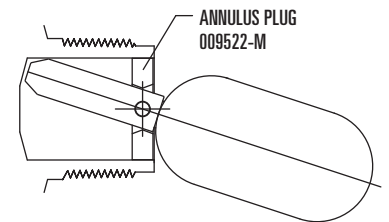
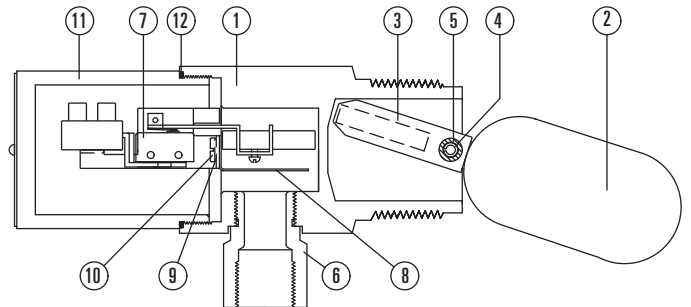
C MATERIALS	
A	316 S.S. process connection with 316 S.S. trim

D OPTIONS & ADDITIONS	
C	External chamber - carbon steel with (2) 1-in. NPT connections
E*	External arm (specify length)
FL	Light Float (SG=0.5 w/o extension)
S	Stainless steel tag
X	Annulus plug

*Available sizes for Extension arm: 2", 3", 4", 5", 6", 10", 12" and 14"

ITEM	DESCRIPTION	QTY.	PART NO.
1	Body 1 1/2-in. NPT, ASTM A-276 TY.316	1	1125449
	Body 2-in. NPT, ASTM A-276 TY.316	1	1123522
2	Float, 316 stainless steel	1	1121162
3	Counter weight, ASTM A-276 TY.31	1	1126600
4	Pivot pin, 316 S.S.	1	1123197
5	Spacer, 316 S.S.	2	1125187
6	Adapter, ASTM A-582 TY.303	1	1126055
7	Switch assy, SPDT	1	1124861
	Switch assy, DPDT	1	1126246
8	Switch protector, 304SS	1	1124859
9	Lock washer, S.S.	2	1119952
10	Screw, 18-8 S.S.	2	1122988
11	Cap, 303 stainless steel	1	1122031
12	O-ring, buna-N	1	1031480
13*	Screw, ground, 18-8 S.S.	1	1118882
14*	Ground cup, S.S.	1	1124484
15*	Ground wire (for DPDT switch only)	1	1121376

*Not shown on model



OPTIONAL PARTS FOR 790

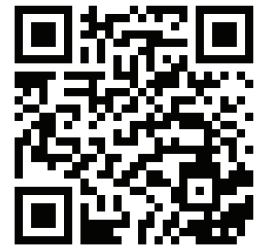
Wiring diagram for 790 with float in down position

1 Black	Common
2 Blue	Normally closed
3 Red	Normally open

Why you can depend on genuine Norriseal-Wellmark products

- In-house engineering and technical support
- In-depth applications experience
- Award-winning innovation and ongoing product development
- ISO 9001 certified manufacturing
- Over five decades of industry service
- Compliance with all industry standards and specifications
- Responsive service and prompt delivery
- Field support available worldwide

Contact Norriseal-Wellmark for more information about our products and services.



Follow us on LinkedIn.

Texas

Houston 713-466-3552

Oklahoma

Oklahoma City 405-672-6660

Louisiana

Broussard 337-837-3223

NorrisealWellmark.com



NorrisealWellmark.com

Norriseal-Wellmark | 11122 W Little York Rd | Houston, TX 77041 | T: +1 877-667-6418

This document is provided on an "as is" basis without warranties of any kind. Norriseal-Wellmark DISCLAIMS ALL WARRANTIES, EXPRESS OR IMPLIED, INCLUDING, BUT NOT LIMITED TO, IMPLIED WARRANTIES OF MERCHANTABILITY, FITNESS FOR A PARTICULAR PURPOSE OR SUITABILITY FOR ANY PURPOSE, TITLE, AND NON-INFRINGEMENT. While reasonable care has been taken in the preparation of this document, Norriseal-Wellmark does not represent or warrant that the contents of this document are accurate, complete, reliable, current or error-free.