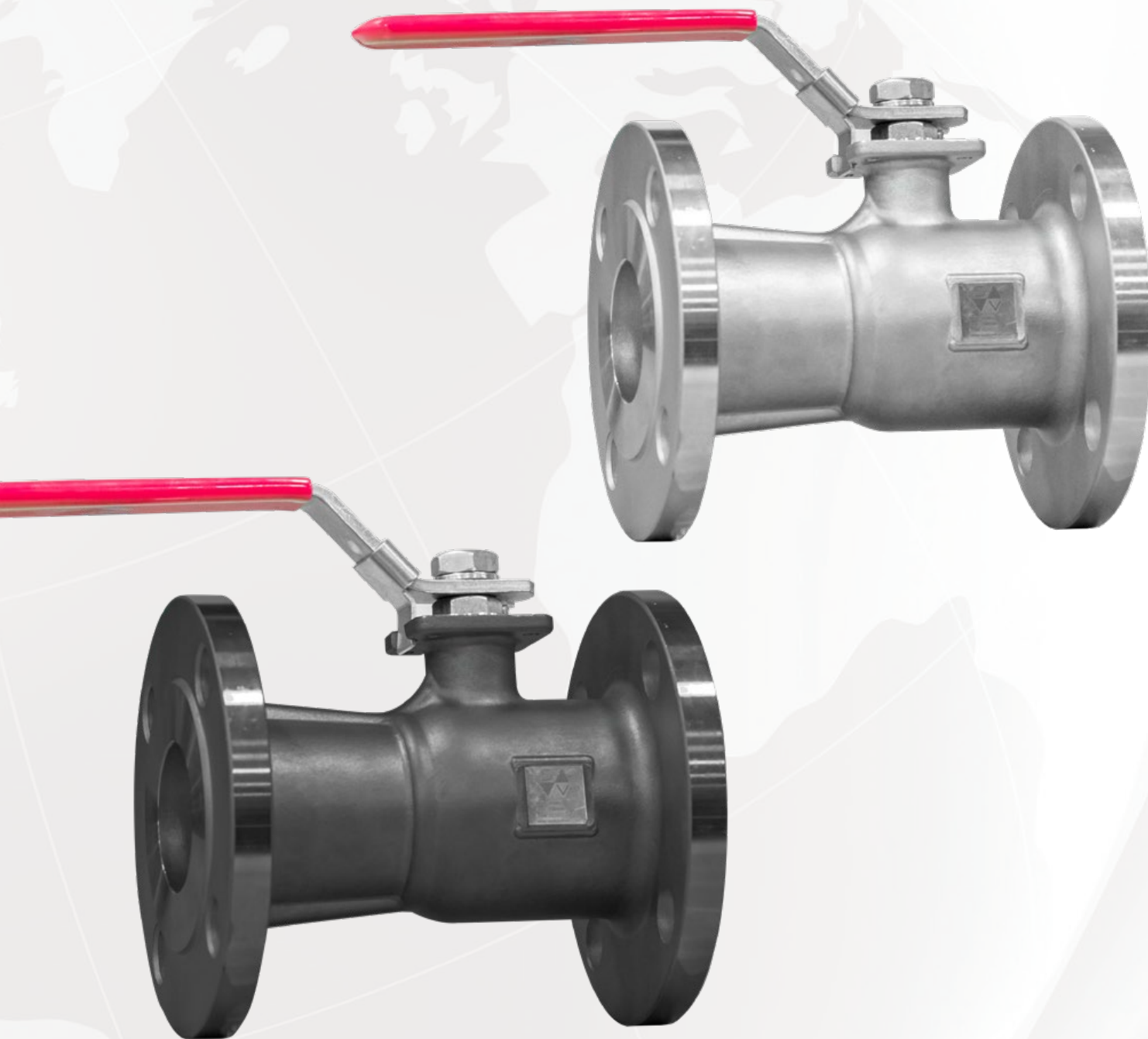


UNIBODY FLANGED ISO 5211 MOUNT

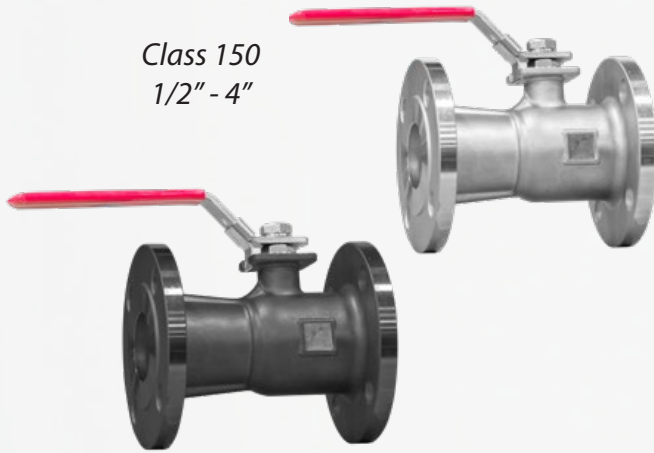
PED  



114 Resource Drive Wentzville, MO 63385 USA
Tel: (636) 856-8576 - Fax: (636) 856-8930
www.sestovalves.com - sales@sestovalves.com

Features & Benefits

MU1F Series Class 150 1-PC Design



Certifications and Compliance

Sesto Valves are designed and manufactured to internationally recognized standards including but not limited to the following:

Testing: API 598

Design: ASME B16.34, ASME B16.5, ASME B16.10

Markings: MSS-SP-25, PED

Certifications: PED

Features and Benefits

Class 150

Size Range 1/2" thru 4" Reduced Bore

ISO 5211 Mount Pad

Body Material CF8M, WCB

Body Wall Thickness ASME B16.34

End Connections: RF Flanged

Fugitive Emissions ISO 15848

Anti-Static Device and Live-Loaded Packing

Bubble Tight Shut Off

Blowout Proof, Low Torque Guided Stem Design

Manual, Electric, Pneumatic Operators

End Connections



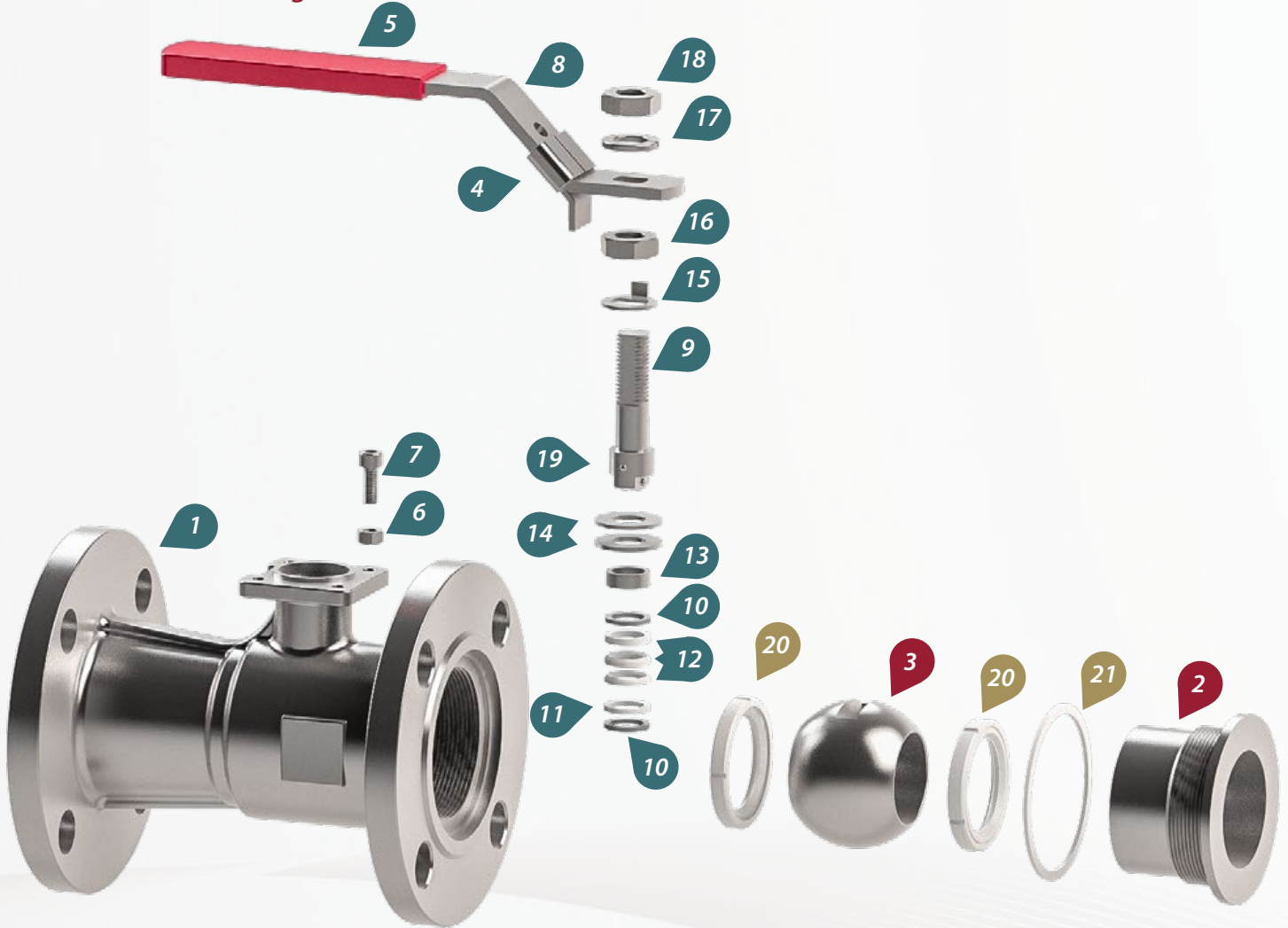
Flanged
(RF)

Versatility & Reliability

The Sesto Valves MU1F Series ISO mount 1-pc unibody floating flanged ball valve design starts with a high quality investment cast body, designed and tested in compliance with ASME B16.34 standards. Precision machined surfaces and tighter manufacturing tolerances allow for precise assembly and fitting of body components and seals. Because of reduced dimensional variations, seats can be designed for minimal compression. This results in lower, more consistent torques and longer seat life. Every valve is factory tested and serialized for quality control and traceability.

This section intentionally left blank.

MU1F - Class 150 Design




MU1F - Class 150 Design

	#	PARTS	CF8M	WCB
			STAINLESS STEEL (BODY CODE "S")	CARBON STEEL (BODY CODE "C")
BODY & BALL	1	BODY	ASTM A351 CF8M	ASTM A216 WCB
	2	CAP	ASTM A351 CF8M	ASTM A216 WCB
	3	BALL	ASTM A351 CF8M	ASTM A351 CF8M
	4	LOCKING DEVICE	SS304	SS304
	5	HANDLE SLEEVE	VINYL	VINYL
	6	STOP NUT	SS304	SS304
	7	STOP BOLT	SS304	SS304
	8	HANDLE	SS304	SS304
SEATS & SEALS	20	SEAT	TFM 1600	TFM 1600
	21	GASKET	PTFE	PTFE
STEM & PACKING	9	STEM	SS316	SS316
	10	THRUST WASHER	50% SS 50% PTFE	50% SS 50% PTFE
	11	STEM SEAL	PTFE	PTFE
	12	STEM PACKING	PTFE	PTFE
	13	GLAND	SS304	SS304
	14	BELLEVILLE WASHER	304CSP	304CSP
	15	LOCK SADDLE	SS304	SS304
	16	STEM NUT	SS304	SS304
	17	WASHER	SS304	SS304
	18	HANDLE NUT	SS304	SS304
	19	ANTI STATIC DEVICE	SS316	SS316

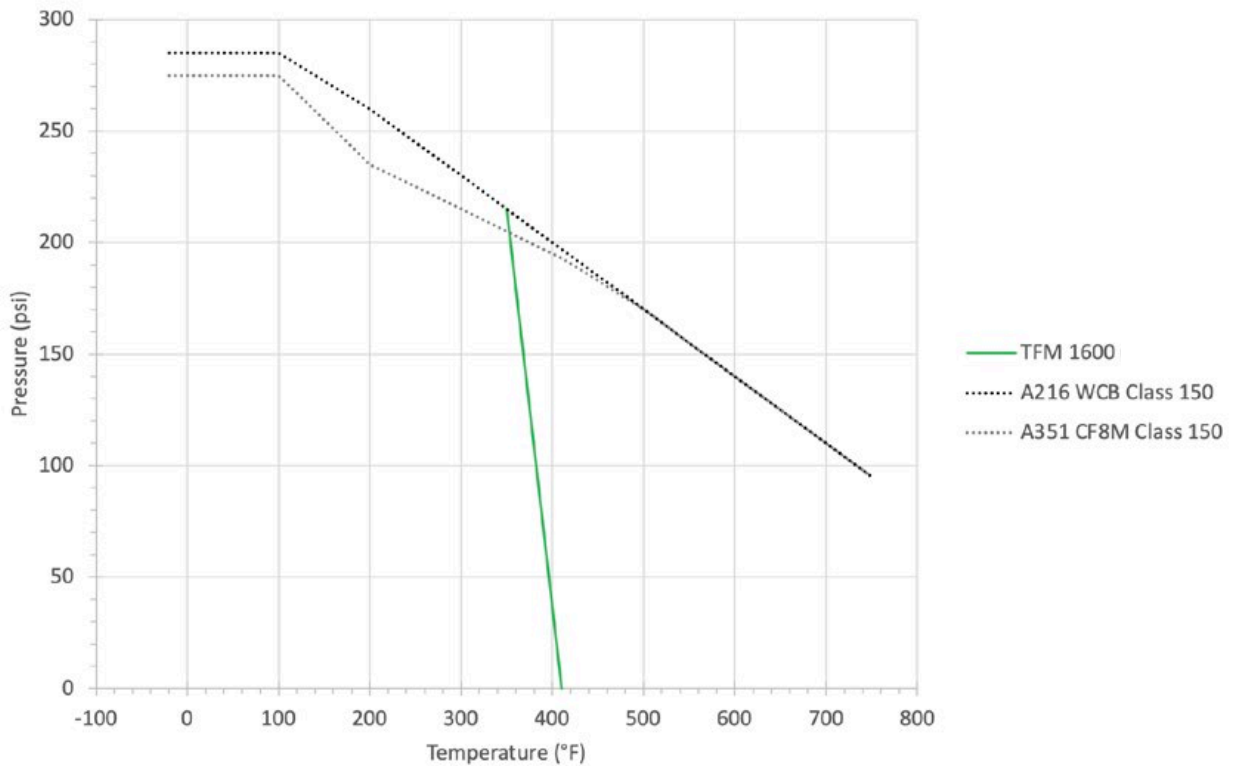
Seat Guide & PT Chart

Seat Guide*

TFM 1600 (MODIFIED PTFE)
RECOMMENDED
Chemical Environments, Steam, Moderate Pressures
NOT RECOMMENDED
Fluorinated Chemicals
TEMPERATURE
-45°C to +232°C (-50°F to +450°F)
COLOR
 Translucent White

* Seat material selection involves a large number of process variables and can be somewhat complex. If you do not have any experiential knowledge of what materials work well in your process, it is recommended that you contact Sesto Valves for guidance in selecting the appropriate materials. Selection of a non-optimal material can significantly shorten the valve's service life. This information is only provided as a general guideline of applications in which these seat materials are known to work well or are not recommended.

Pressure Temperature Chart



Example Part Number

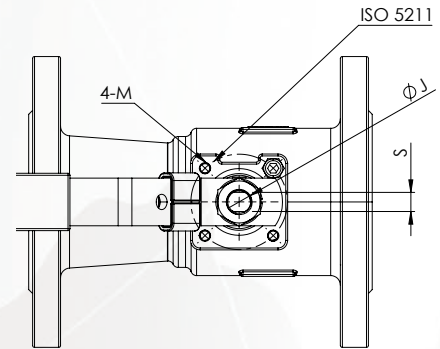
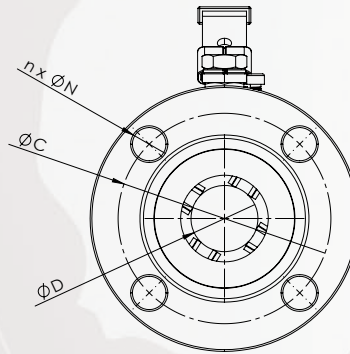
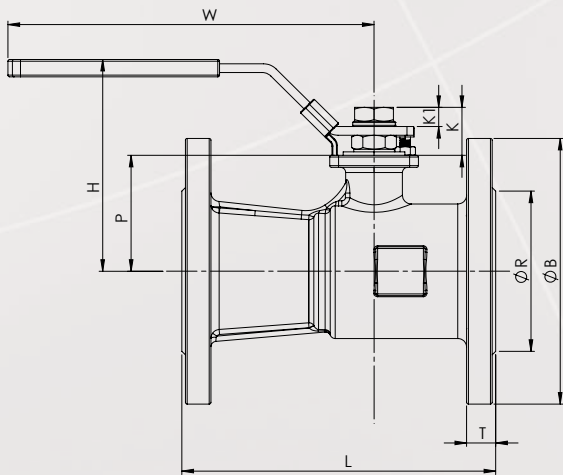
FIGURE	-	SIZE	-	BODY	TRIM	TYPE	SEATS	-	OPERATOR	-	SPECIAL
MU1F	-	01	-	S	6	0	F	-	N	-	

EXAMPLE PART NUMBER: MU1F-01-S60F-L

EXAMPLE DESCRIPTION: 1" MU1F SERIES FLOATING 1PC. BALL VALVE, CLASS 150, REDUCED PORT, FLANGED ENDS, ASTM A351 GR CF8M BODY, ASTM A351 GR CF8M BALL, ASTM A276-316 STEM, TFM 1600 SEATS, PTFE PACKING & STEM SEAL, W/ LOCKING LEVER HANDLE

FIGURE	-	SIZE	-	BODY
MU1F - FLOATING 1-PC 150# FLANGED BALL VALVE, REDUCED PORT	-	0M - 1/2" 02 - 2" 0T - 3/4" 03 - 3" 01 - 1" 04 - 4" 1M - 1 1/2"	-	C - ASTM A216 - WCB S - ASTM A351 CF8M 9 - SPECIAL

TRIM	TYPE	SEATS	-	OPERATOR	-	SPECIAL
6 - 316 SS BALL / 316 SS STEM 9 - SPECIAL	0 - STANDARD 9 - SPECIAL	F - TFM 1600 9 - SPECIAL	-	N - BARE STEM L - LOCKING LEVER 9 - SPECIAL	-	CONSULT FACTORY



MU1F - Dimensions

SIZE (in)	D (in)	L (in)	T (in)	R (in)	C (in)	B (in)	P (in)	N (in)	n	H (in)	W (in)	S (in)	J	K (in)	K1 (in)	M	ISO 5211	CV	WEIGHT (lb)	TFM 1600 Torque
1/2"	0.50	4.25	0.44	1.38	2.38	3.50	1.04	0.63	4	2.87	5.91	0.20	0.31	0.63	0.29	M5	F04	13	3.2	95
3/4"	0.59	4.61	0.44	1.69	2.76	3.88	1.54	0.63	4	3.23	5.71	0.25	0.37	0.59	0.39	M5	F04	24	4.1	95
1"	0.79	5.00	0.44	2.01	3.13	4.25	1.67	0.63	4	3.39	5.71	0.25	0.37	0.59	0.43	M5	F04	47	5.6	143
1 1/2"	1.26	6.50	0.56	2.87	3.88	5.00	2.22	0.63	4	4.17	7.28	0.31	0.44	0.94	0.62	M6	F05	132	9.0	191
2"	1.50	7.01	0.63	3.62	4.74	6.00	2.62	0.75	4	4.72	8.07	0.39	0.55	1.02	0.59	M6	F05	202	14.8	191
3"	2.50	7.99	0.75	5.00	6.00	7.50	3.66	0.75	4	6.69	15.94	0.67	0.87	1.83	0.91	M8	F07	642	33.5	286
4"	3.15	9.06	0.94	6.18	7.50	9.02	4.24	0.75	8	7.01	15.94	0.67	0.87	1.75	0.87	M8	F07	901	52.3	382

Sesto Valves may change dimensions without any notice.

Torques

Raw torques shown in inch-pounds. Minimum 30% safety factor should be added for actuator sizing.



European Headquarters
Agrate Brianza (MB) Italy

North American Headquarters
114 Resource Drive Wentzville, MO 63385 USA
Tel: (636) 856-8576 - Fax: (636) 856-8930
www.sestovalves.com - sales@sestovalves.com

Asian Office
Jinan, China

Rev: 02/14/23