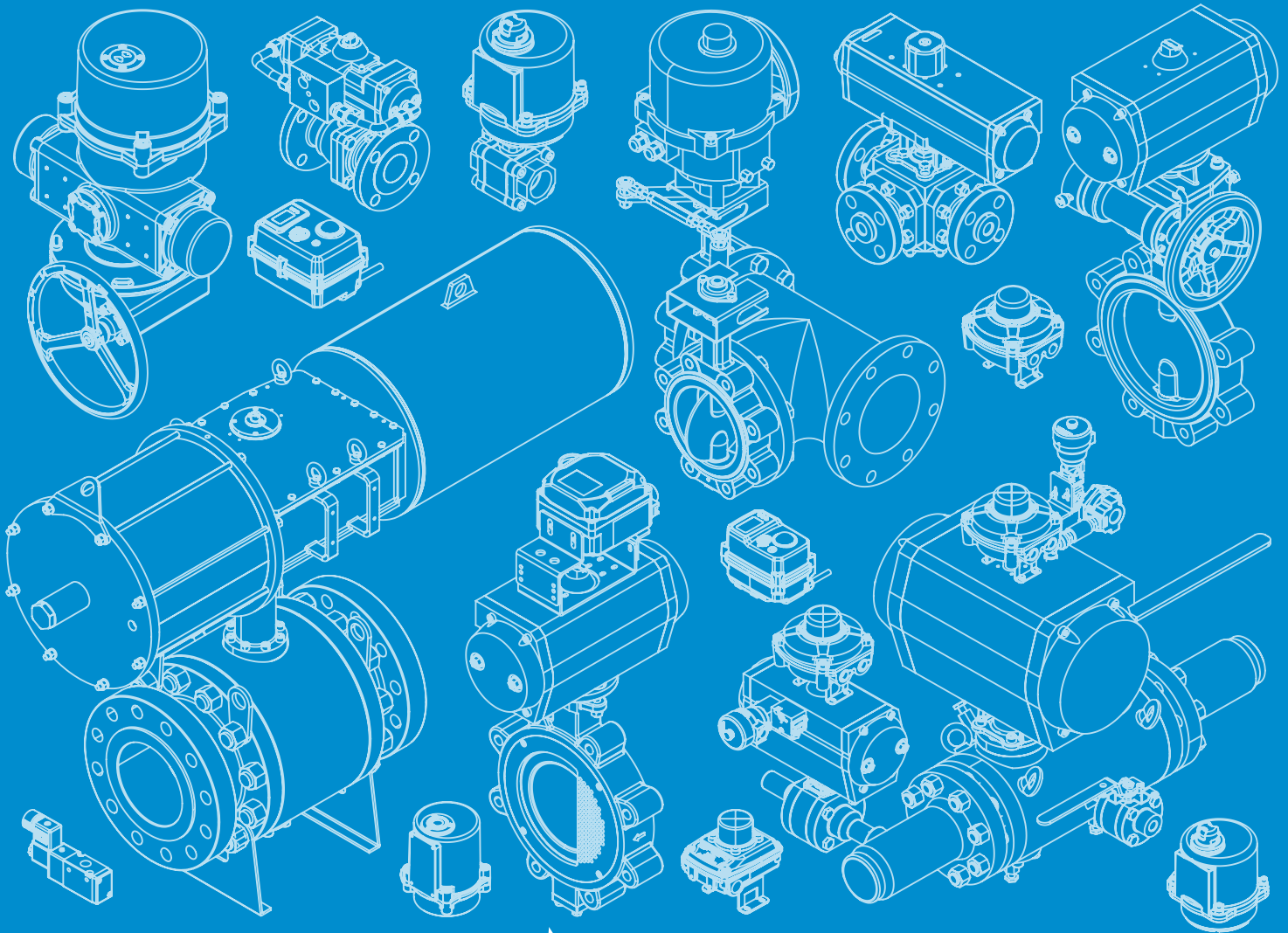


Max-Air TECHNOLOGY

The Best Way To Automate Your Process



Max Electric™
A Brand of Max-Air Technology.

DELTA T
A Brand of Max-Air Technology.

SESTO VALVES
A Brand of Max-Air Technology.

Max-Air Group Portfolio

Max-Air Technology Inc. | Rotary Actuators, Butterfly Valves, Ball Valves & Automation Solutions

Max-Air Technology, Inc. • 114 Resource Drive • Wentzville, MO 63385 • United States of America
Tel +1.636.272.4934 • Toll Free 888.842.9998 • Fax 636.272.4937 • www.maxairtech.com • sales@maxairtech.com

Who is Max-Air?

Max-Air Technology Inc. | Privately Owned | Est. 1996



Our Company History

In the 1970's, our founder Mario Tartarelli graduated from the University of Milan with a degree in Electro-Mechanical Engineering and began his career designing advanced flow control solutions for manufacturing processes. Through firsthand experience, Mr. Tartarelli recognized that innovation in automation technology was the future, and he seized the opportunity to create innovations of his own.

In 1996, Emme Technology was established as an engineering, design, and manufacturing base in the heart of northern Italy, within the historic industrial district of Sesto San Giovanni. The first products introduced were a line of specialty polymer-based quarter turn pneumatic actuators. This quickly expanded into a full line of aluminum pneumatic actuators with patented design features that have become the industry standard for our partners worldwide.

In 1999, Max-Air Technology was founded in the heartland of the United States as the North American headquarters for sales, manufacturing,

and automation solutions. Over the next two decades, the Max-Air Technology brand continued to expand its product portfolio and global footprint. The strategic development of new valve and actuator lines enabled an offering of more complete automated valve solutions, and the expansion of sales and manufacturing capabilities in Italy and in Asia helped support these new products and sales.

More recently, Max-Air Technology embarked on new initiatives to expand more heavily into the electric quarter-turn actuation market, including new innovative accessory products with advanced communication capabilities.

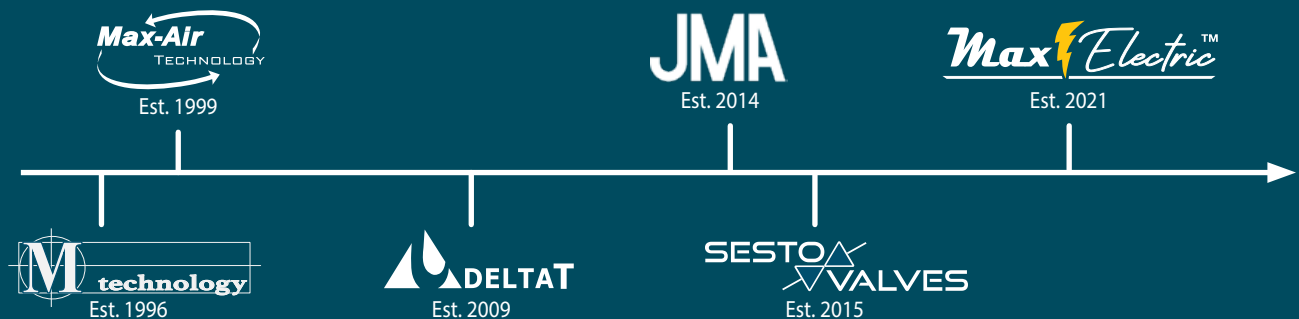
In the years ahead, Max-Air Technology's organization plans to invest in product innovation and growth in additional market segments, continually striving for innovation and to earn the right to become "The Best Way to Automate Your Process."

Value Statement

At Max-Air Technology, we do not just sell products, we provide solutions. We help people solve problems by providing innovative automation solutions with technical excellence through personal and responsive support. We value long-term partnerships and seeing our partners grow and succeed with us.

The Timeline

A Chronology of Established Companies & Brands



UNITED STATES

North & South American HQ
Max-Air Technology Inc.
Wentzville, MO 63385



EUROPE

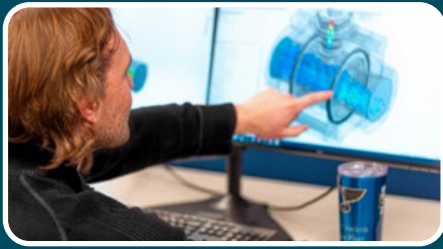
Worldwide HQ
Emme Technology S.r.l.
Milan, Italy



Manufacturing Facilities



The best way to automate your process.



Engineering

The Max-Air Group uses software like Conval and Solidworks Flow Simulation to predict and understand exactly how your product will work in the field.

- Sizing & Selection
- Online Sizing Program
- 2D/3D Models
- Project Spec Work
- Traceability & Custom Tags
- Installation Supervision
- Valve Education
- Flow Simulation & 3D Visualization
- Conval Flow Calculator



Manufacturing

Our commitment to manufacturing, assembling, customizing, accessorizing, calibrating, and testing ensures that the product/solution exceeds the expectations of the desired application.

- Powder Coating
- 3D Printing for Prototyping
- Assembly & Testing
- Automation & Repair
- Termination & Calibration
- Butterfly & Ball Valve Testing
- Air Controls & Tubing
- Valve Seat Changeout
- Specialty Finish/ Coating
- Custom Mounting Kits



Customer Support

From the first correspondence to the final tech support call, Max-Air is committed to supporting its products, services, and customers.

- Sales Tools & Literature
- Technical Support
- Fast Response
- Test Reports
- Quick Ship
- On-Site Visits
- Valve Failure Diagnostics
- Shipping & Delivery
- Expedite Options
- Emergency Support

Certified Quality



Max Air Technology is committed to the production of quality products and to providing high quality customer service. As a result, all of our member companies have developed quality systems compliant to ISO 9001 and had those systems verified through the appropriate certification authorities worldwide. In addition, where applicable, we have submitted our products to independent notified bodies and Nationally Recognized Testing Laboratories for verification of compliance to the requirements of national and global standards. We also hold our critical suppliers to the same high level expectations and requirements of our customers worldwide.

The Max Air group designs our products in compliance with the applicable industry standards for valves, actuators, and accessories including standards from:

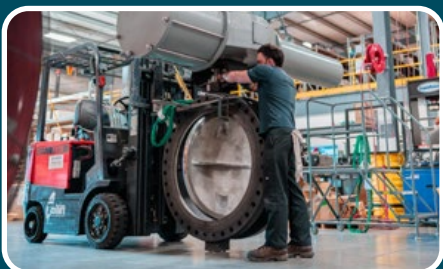
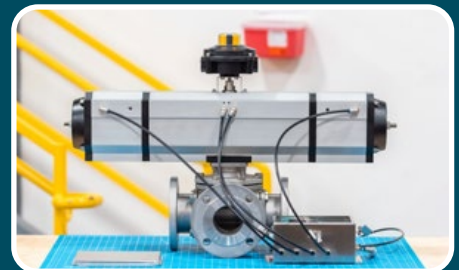
ISO, MSS, ASME, API, Namur VDI/VDE, NACE, ANSI, UL, & Others

Where applicable, those compliances have been independently verified by independent certifying authorities such as:

ABS, DNV, ALS, API, TUV, CSA, TSSA / CRN, & Others

Assembly & Testing

Max-Air Technology's engineering and production teams work in tandem to provide expert assembly and testing services. From the most standard on/off assemblies to custom modulating tee assemblies, we assemble and test complete automation packages so that your product is ready to install as soon as it arrives. We can be your one-stop shop for all of your automation needs.



Max-Air Technology

The Best Way to Automate Your Process.



Pneumatic Rack & Pinion



MT Series Aluminum

- 17 Sizes w/ Anodized Aluminum Housing
- Torque Ratings up to 46,000 in-lbs (DA) / 22,700 in-lbs (SR)
- ISO 5211 Mounting w/ Female Drive
- Double-Acting, Fail Close, or Fail Open
- Patented Dual Travel Stops +/-10°
- High Cycle Life Design, SIL 3 Capable
- LockMesh Coating Option (SS+PTFE)



SS Series Stainless

- 10 Sizes w/ Stainless Steel Housing
- Torque Ratings up to 17,600 in-lbs (DA) / 8,400 in-lbs (SR)
- ISO 5211 Mounting w/ Female Drive
- Double-Acting, Fail Close, or Fail Open
- Patented Dual Travel Stops +/-10°
- High Cycle Life Design, SIL 3 Capable



UT 180° Series Aluminum

- 10 Sizes w/ Anodized Aluminum Housing
- Torque Ratings up to 17,690 in-lbs (DA) / 4,210 in-lbs (SR)
- ISO 5211 Mounting w/ Female Drive
- Double-Acting, Fail Close/Open, Fail to Center
- Patented Dual Travel Stops +/-10°
- High Cycle Life Design, SIL 3 Capable



UT Series Technopolymer

- 3 Sizes w/ Polyarylamide Epoxy Resin Housing
- Torque Ratings up to 530 in-lbs (DA) / 230 in-lbs (SR)
- ISO 5211 Mounting w/ Female Drive
- Double-Acting, Fail Close, or Fail Open

Pneumatic Scotch Yoke



HD Series - Scotch Yoke Pneumatic/Hydraulic

- 7 Frame Sizes w/ Modular Design
- Torque Ratings up to 3,000,000 in-lbs (DA) / 1,400,000M in-lbs (SR)
- ISO 5211 Mounting w/ Female Keyed Drive
- Double-Acting, Fail Close, or Fail Open
- Pneumatic or Hydraulic Fluid Power Cylinders
- Optional Hydraulic Handpump Override



AG Series - Scotch Yoke Pneumatic/Hydraulic

- 100% Designed & Manufactured in Italy
- 3 Frame Sizes w/ Modular Design
- Torque Ratings up to 310,000 in-lbs (DA) / 170,000 in-lbs (SR)
- ISO 5211 Mounting w/ Female Keyed Drive
- Symmetric, Canted, or Hybrid Yoke Options
- Integrated Safety & Repair Features
- Optional Hydraulic Handpump Override

Pneumatic Accessories



SV/NV Series Solenoid Valves

- 1/2" or 1/4" NPT Connections
- 1/4" NAMUR Direct Mount or Inline
- 3-Way, 4-Way, NC/NO, 3-Position Available
- IP65, Explosion Proof, or Intrinsically Safe
- 120/220VAC, 24VDC/VAC, 12VDC, + More
- Optional Speed Control Mufflers



41/45/48 Series Limit Switches

- Aluminum, Stainless, or Polymer Housings
- NAMUR VDI/VDE 3845 Mounting Included
- NEMA 4/4X, Explosion Proof, or Int. Safe
- Mechanical, Proximity, or Inductive Switches
- Optional T/L-Port Beacons



PET/PXT/PES Analog & Smart Positioners

- Aluminum or Stainless Steel Housings
- NAMUR VDI/VDE 3845 Mounting Included
- NEMA 4/4X, Explosion Proof, or Int. Safe
- Analog or Smart Auto-Calibration Available
- Optional Feedback or Communication



Termination & Tubing

- NEMA 4/4X, Explosion Proof, or Int. Safe
- Flexible or Hard Tubing & Fittings Available

Manual Operators



Lockout/Tagout Available

GO/GOW Series Manual Operators

- 14 Sizes w/ Torques up to 885,000 in-lbs
- ISO 5211 Mounting w/ Female Drive
- Direct or Declutchable Operation

Competitive Ball Valves



E Series Valves

- Max-Air's E-Series Valves are well suited to competitive opportunities & projects.
- 2-Way & 3-Way, Class 150 to 1000 WOG
 - Brass, Stainless, & Carbon Steel
 - Size Range 1/4" thru 8" Full Port (3-Way 1/4" - 2.5" Reduced port)
 - ISO 5211 Direct Mount Pad or Manual Operation w/ Locking Handle
 - End Connections: NPT Threaded, Socket Weld, & Flanged

Light Duty



AE Series | Light Duty

AE Series electric actuators offer a compact, light duty solution w/ a range of standard features and options.

- 2 Frame Sizes w/ Standard IP67 Enclosure
- Torque Ratings from 80 in-lbs to 1,500 in-lbs
- Polycarbonate Lid w/ Open & Close LEDs
- 24VAC/VDC, 120VAC, 12VDC, 220VAC
- Open/Close
- Manual Override, 2 x Aux Switches, Heater Standard
- Extended Duty Available

Intelligent



MA Series | Intelligent

MA Series electric actuators use an intelligent OLED interface for smart operation and configuration in a compact design, w/ electronic fail-safe options.

- 4 Frame Sizes w/ Standard IP67 Enclosure & 3 Meter Leads
- 8 Torque Ratings from 113 in-lbs to 1,770 in-lbs
- OLED Screen w/ Smart Push Button Calibration
- Open/Close/Jog, Modulating, or 3-Position Control
- 24VAC/VDC or 90~265VAC
- Manual Override, 2 x Aux Switches
- Thermostatically Controlled Heater
- Supercap Failsafe Available

Industrial



ME Series | Industrial

ME Series electric actuators come standard with heavy duty industrial enclosures and a full suite of options to fit your application and meet the most demanding specifications.

- 8 Frame Sizes w/ Standard NEMA 4/4X/IP67 Enclosure
- 15 Torque Ratings from 310 in-lbs to 40,000 in-lbs
- ISO 5211 Mounting w/ Female Drive
- Open/Close/Jog, Modulating, or 3-Position Control
- 12VAC/VDC, 24VAC/VDC, 120VAC, 230VAC, or 3-Phase
- Manual Override, 2 x Aux Switches, Thermostat Heater Standard
- Failsafe Stored Energy Solutions, Local Control Stations, IP68, & Torque Switches Available

Spring Return



SE Series | Spring Return

SE Series electric mechanical spring return actuators provide mechanical failsafe positioning to either a full CW or CCW position upon loss of mains power.

- 5 Frame Sizes w/ Standard NEMA 4/4X/IP68 Enclosure
- 5 Torque Ratings from 475 in-lbs to 3,185 in-lbs
- ISO 5211 Mounting w/ Female Drive
- Open/Close Control w/ Optional Manual Override
- 24VAC, 24VDC, 120VAC, 230VAC, or 3-Phase
- Modulating 120VAC & 230VAC Only
- 2 x Aux Switches & Thermostat Heater Standard
- Local Control Stations Available

Industrial Class/Div

HazLoc



MX Series | Industrial, Class/Div

MX Series Hazardous Location electric actuators comply to CSA Class 1, Division 1, Groups C, D T4.

- 6 Frame Sizes w/ Standard IP68 Enclosure
- 10 Torque Ratings from 310 in-lbs to 13,280 in-lbs
- ISO 5211 Mounting w/ Female Drive
- Open/Close/Jog or Modulating Control
- 24VAC/VDC, 120VAC or 230VAC Single Phase
- Manual Override, 2 x Aux Switches, Thermostat Heater Standard
- Torque Switches Standard

Spring Return Class/Div

HazLoc



SX Series | Spring Return, Class/Div

SX Series Hazardous Location electric mechanical spring return actuators provide mechanical failsafe positioning and comply to CSA Class 1, Division 1, Groups C, D T4.

- 4 Frame Sizes w/ Standard IP68 Enclosure
- 4 Torque Ratings from 475 in-lbs to 2,300 in-lbs
- ISO 5211 Mounting w/ Female Drive
- Open/Close Control w/ Optional Manual Override
- 24VAC, 24VDC, 120VAC, 230VAC, or 3-Phase
- 2 x Aux Switches & Thermostat Heater Standard

Delta T Valves

Resilient, High Performance, Triple Offset, & Control Butterfly Valves



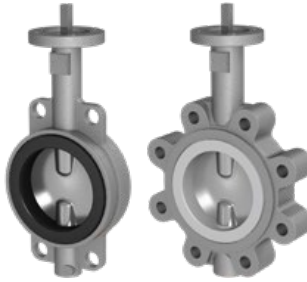
A Brand of Max-Air Technology.

Resilient Seated



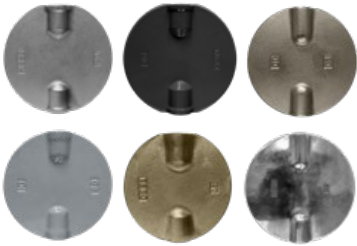
050/051 Series Ductile Iron

- Iron Body Butterfly Valve; sizes 1-1/2" – 48"
- Wafer & Lugged Body Styles
- Cartridge Seat Design
- Manual Valves w/ handle or gear operator available
- ISO 5211 mounting patterns for ease of actuation



650/651 Series Stainless Steel

- Stainless Body Butterfly Valve; sizes 2" – 24"
- Wafer & Lugged Body Styles
- Cartridge Seat Design
- Manual Valves w/ handle or gear operator available
- ISO 5211 mounting patterns for ease of actuation



Disc Options

Nickel Plated Ductile Iron,
Aluminum Bronze,
Nylon 11 Coated Ductile Iron,
CF8M Stainless Steel,
Polished CF8M Stainless Steel,
PTFE Coated CF8M Stainless Steel



Seat Options

Buna, EPDM, Viton, PTFE/EPDM,
High Temp EPDM, Wear Resistant
EPDM, Food Grade White/Black EPDM,
Food Grade White Buna, Natural Rubber,
CSM, Neoprene, Silicone

High Performance



800 Series

- ANSI 150, 300, & 600
- Wafer, Lugged, & Flanged
- WCB & CF8M bodies stocked
- ISO 5211 Mount
- Size Range 2"-48"
- Custom alloys & trims available
- Stainless Steel disc & stem standard
- TFM 1600 seats are standard, other soft seats are available
- Fire Safe & Metal seated versions
- Bi-directional Class VI / Bubble Tight
- Bi-directional Dead End service

Triple Offset



900 Series

- ANSI 150, 300, & 600
- Wafer, Lugged, & Flanged
- Size Range 3"-48"
- Class VI Preferred Direction
- Stainless Steel disc & stem standard
- Custom alloys & trims available
- Fire Safe & Metal Seated
- Bi-directional Dead End service
- Replaceable body disc

Cavitation Control



Patented Spherical-Disc Diffuser-Plate Design

- ANSI 150, 300, & 600
- Wafer, Lug, & Flanged
- ISO 5211 Mount
- Size Range 3"-28"
- Unparalleled Range-Ability w/ Equal Percentage Flow
- Controllable Range 5°-85°
- Fine-Tuned Low Flow Control & High Flow Capacity
- Reduced Noise & Vibration

Exotic Alloys



Exotic Alloys Are Our Specialty

Our **High Performance** & **Triple Offset** Valves are available in special materials including Aluminum Bronze, Duplex SS, Super Duplex, Inconels, Incolloys, etc.

Sesto Valves

Standard, Midrange, & Premium Ball Valves

SESTO
VALVES

A Brand of Max-Air Technology.

Midrange



Body Wall Thickness
ASME B16.34 V-Balls Available

M32 Series

3-Piece Ball Valves

- 2000 WOG (Class 800)
- Size Range 1/4" thru 3" Full Bore
- ISO 5211 Direct Mount Pad
- End Connections:
NPT, SW, BW, RF, Special
- Fugitive Emissions ISO 15848
- Firesafe Tested API 607
- 15°/30°/60°/90° V-Balls Available



Body Wall Thickness
ASME B16.34 V-Balls Available

M15F/M30F Series

2-Pc Flanged Ball Valves

- Class 150 & Class 300
- Size Range 1/2" thru 8" Full Bore
- M15F – ISO 5211 Direct Mount Pad
- M30F – ISO 5211 Mount
- End Connections: RF Flanged
- Fugitive Emissions ISO 15848
- Firesafe Tested API 607
- 15°/30°/60°/90° V-Balls Available



Body Wall Thickness
ASME B16.34

M22 Series

2-Pc Sealweld Ball Valves

- 2000 WOG (Class 800)
- Size Range 1/4" thru 2" Full Bore
- ISO 5211 Direct Mount Pad
- End Connections: NPT
- Fugitive Emissions ISO 15848
- Firesafe Tested API 607



Body Wall Thickness
ASME B16.34

MM1F Series

Multiport Flanged Ball Valves

- Class 150 & Class 300
- Size Range 1/2" thru 12" Full Bore
- ISO 5211 Direct Mount Pad (Up to 4")
- Body Material CF8M, WCB
- End Connections: RF Flanged



Body Wall Thickness
ASME B16.34

MU1F Series

Unibody Flanged Ball Valves

- Class 150
- Size Range 1/2" thru 4" Reduced Bore
- ISO 5211 Mount Pad
- Body Material CF8M, WCB
- End Connections: RF Flanged



Body Wall Thickness
ASME B16.34

MV1F Series

Segmented Ball Valves

- Class 150
- Size Range 1" thru 16"
- ISO 5211 Mount Pad
- Body Material CF8M, WCB
- End Connections: RF Flanged

Premium



Floating Ball Valves

- Class 150 to Class 2500
- Size Range 1/4" thru 10"
- Full and Reduced Bore
- Body Wall Thickness ASME B16.34
- Ends: SW, BW, RF, RTJ, NPT, BSP, Special



Floating Multiport Ball Valves

- Class 150 to Class 800
- Size Range 1/2" thru 4" (Custom by Request)
- 3-Way/4-Way Configurations (T, L, Double L)
- 4-Seat Design, Universal Inlet/Outlet
- Floating Full and Reduced Bore
- Single Body Construction (No Top Flange)



Trunnion Ball Valves

- Class 150 to Class 2500
- Size Range 1/2" thru 18"
- Full and Reduced Bore
- Body Wall Thickness ASME B16.34
- End Connections:
RF, RTJ, BW, SW, NPT, BSP, Special
- Fugitive Emissions ISO 15848



Trunnion Multiport Ball Valves

- Class 150 to Class 2500
- Size Range 1/2" thru 12"
- 3-Way/4-Way Configurations (T, L, Double L)
- 4-Seat Guided Design, Universal Inlet/Outlet
- Full and Reduced Bore
- Single Body Construction



Cryogenic Ball Valves

- Class 150 to Class 2500
- Size Range 1/4" thru 24"
- Floating & Trunnion
- Full & Reduced Bore
- Body Wall Thickness ASME B16.34
- Cryogenic tested to -196°C (-320°F)



Block & Bleed Ball Valves

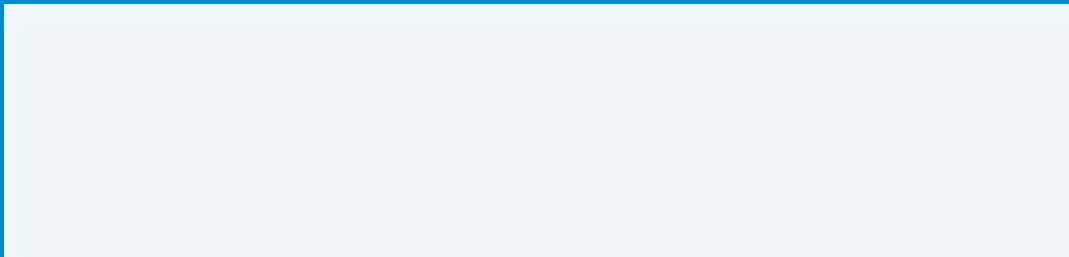
- Class 150 to Class 2500
- Size Range 1/4" thru 16"
- Single & Double Isolation
- Multi-Port Designs Available
- Floating & Trunnion
- Full & Reduced Bore
- Bolted Body Facilitates Inline Maintenance
- Venting/Relief Designs in Multiple Configurations
- Ends: RF, RTJ, BW, SW, NPT, BSP, Special

MAX-AIR TECHNOLOGY

The Best Way To Automate Your Process



Your nearest Max-Air dealer can be found at:



Max-Air Technology, Inc. • 114 Resource Drive • Wentzville, MO 63385 • United States of America
Tel + 1.636.272.4934 • Toll Free 888.842.9998 • Fax 636.272.4937 • www.maxairtech.com • sales@maxairtech.com

© Max-Air Technology, Inc. 2022



R:12/14/22