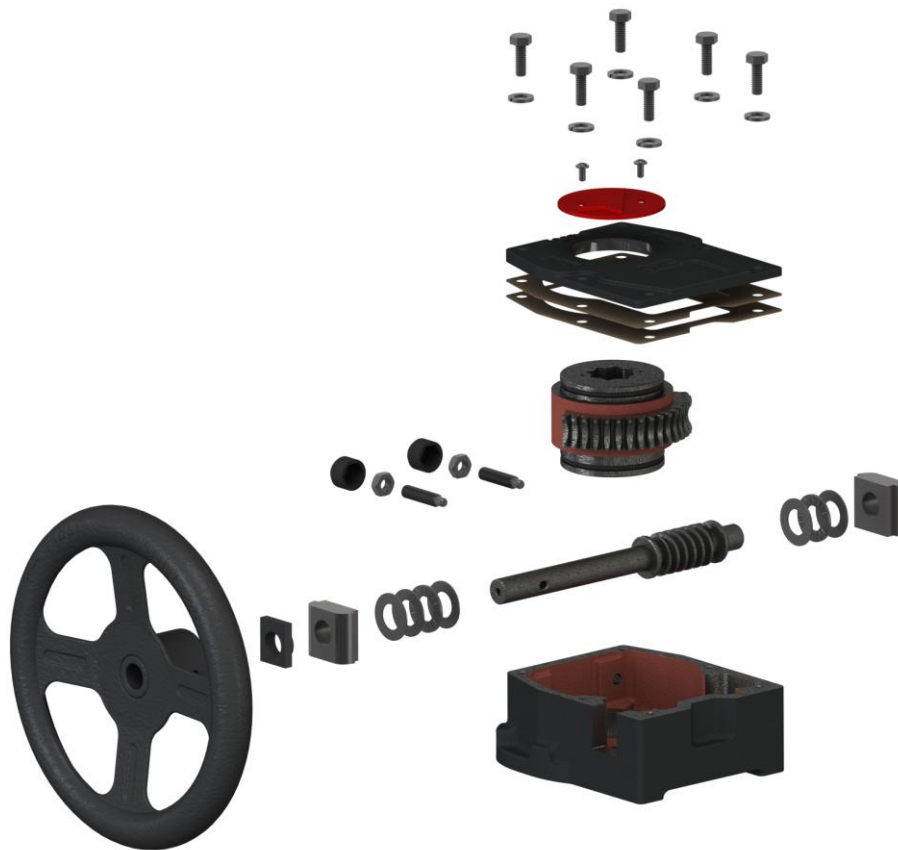




Max-Air TECHNOLOGY
GO-0X-ISO Series: Quarter-Turn Gearing



**INSTALLATION, OPERATION
& MAINTENANCE MANUAL**

Max-Air Technology, Inc.

751 Hoff Road – O'Fallon, MO 63366
Tel: (636) 272-4934 Fax: (636) 272-4937
www.max-airtechnology.com info@max-airtechnology.com

PART 1: INSTALLATION

To select the correct bolts for installation of the manual gear operator, consult the label on top of the unit to determine the part number, then consult **Table 1** for the ISO pattern on your gearbox and **Table 2** for the metric coarse thread for the appropriate pattern. The bolt should not go into the gearbox farther than the depth indicated in **Table 2**. Make sure to use a lock washer with every bolt.

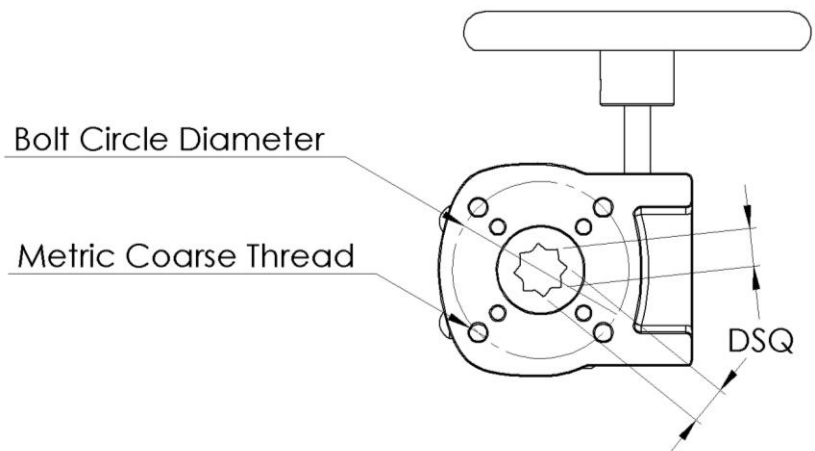
Place both the valve and the gear operator in either the “open” or “closed” position to assure that the indicator correctly denotes the valve position. Verify that the stem size corresponds with the bore size in the gear operator. If it does not, install any required adapters. Then install the bolts and washers and securely tighten them to assure there is no movement between the gearbox and valve body.

Table 1: Gearbox Mounting Hole Patterns

Gearbox	ISO Pattern	DSQ (mm)
GO-01-ISO	F05+F07	11
GO-02-ISO	F07	17
GO-03-ISO	F07+F10	22
GO-04A-ISO	F10+F14	27
GO-04B-ISO	F12	27
GO-05A-ISO	F12+F16	46
GO-05B-ISO	F14	46
GO-06-ISO	F14+F16	CALL
GO-07-ISO	F16+F25	CALL
GO-08-ISO	F16+F25	CALL
GO-09-ISO	F25+F30	CALL
GO-10-ISO	F25+F30	CALL

Table 2: ISO Pattern Dimensions

ISO	Bolt Circle Dia. (mm)	Thread	Depth (mm)
F05	50.0	M6	13.0
F07	70.0	M8	13.0
F10	102.0	M10	25.0
F12	125.0	M12	25.0
F14	140.0	M16	25.0
F16	165.0	M20	25.0
F25	254.0	M16	25.0
F30	298.0	M20	25.0



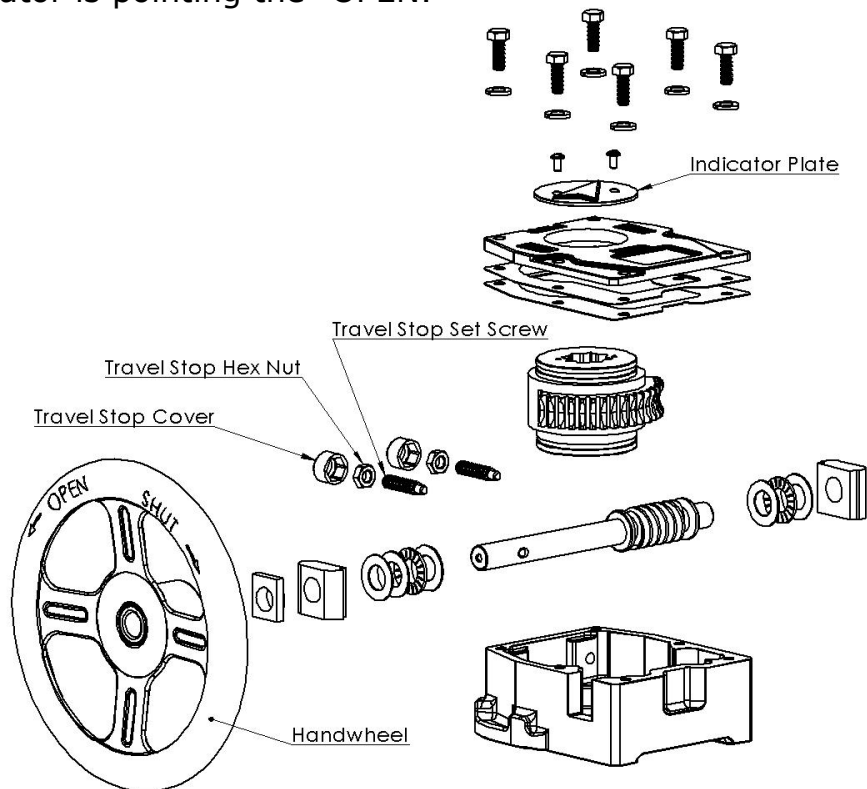
PART 2: CALIBRATION

The travel stops can be adjusted to set the open and closed positions for the valve. When looking at the travel stops with the red indicator plate on top, the left travel stop controls the open position, and the right travel stop controls the closed position. To adjust either of the travel stops, follow these steps:

1. Remove the Travel Stop Cover
2. Loosen the Hex Nut
3. Loosen the Set Screw
4. Operate the gearbox to set the valve at the desired position
5. Screw in the Set Screw until you feel resistance
6. Tighten the Hex Nut while holding the set screw in position
7. Replace the Travel Stop Cover

PART 3: OPERATION

To close the valve, rotate the Handwheel clockwise until the indicator on top is pointing to "SHUT." To open the valve, rotate the Handwheel counter clockwise until the indicator is pointing the "OPEN."



Max-Air Technology, Inc.