



MANUAL DRIP TRAP

MODELS 8460 & 8470



MODELS 8460 & 8470

The Groth Manual Drip Trap may be easily attached to a Groth Sediment Trap for extra efficiency or installed for collection and safe removal of liquids from low points in gas control lines. The Groth Model 8460 is a manually operated drip trap design for pressures up to 5 PSIG. Also available: the Groth Model 8470 for higher pressures (up to 60 PSIG).

Technical Details

- Material: Aluminum (Type 356) body with Stainless Steel internal working parts
- Pressure: 5 PSIG Standard with 1" NPT connection; Up to 60 PSIG on special order
- Capacity of 3 quarts or 6 quarts
- ATEX Certified

Features

- Manual design
- Quick, easy access
- No gas escapes when draining

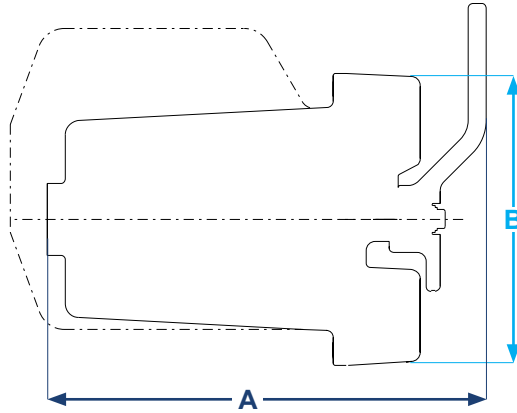
Options

- Insulation jacket



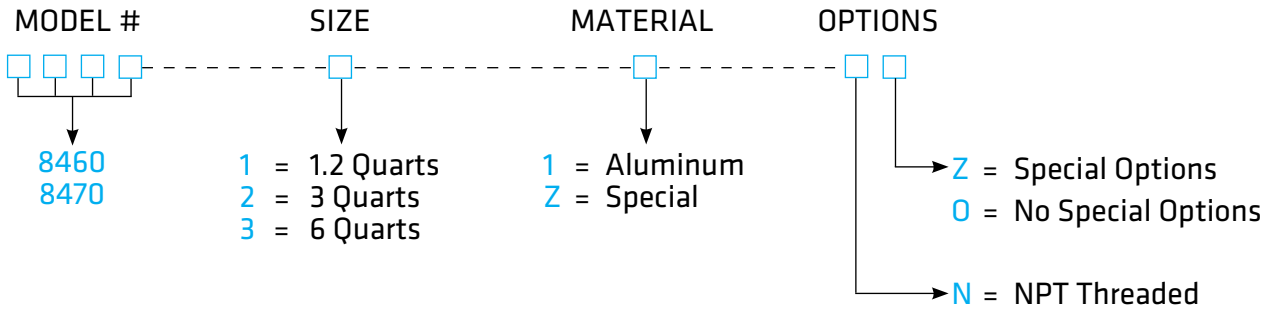
SPECIFICATIONS

Size Qt (liters)	A Height Inches (mm)	B Width Inches (mm)	Approx Ship. Weight Aluminum Lbs. (kg)
1.2 (1.1)	9.50 (241)	7.88 (200)	20 (9)
3 (2.8)	13 (330)	8.50 (206)	25 (11)
6 (5.7)	14 (356)	8.50 (206)	30 (14)



HOW TO ORDER

For easy ordering, select proper model numbers



NOTES

- For special options, consult factory

EXAMPLE

8 4 6 0 — 2 — 1 — N 0



GROTHCORP.COM